



TRAINING COURSE FOR ALBANIAN CIVIL PROTECTION EXPERTS

Module 4

Emergency management and support to local authorities

The assistance to the population in emergency and the **DESIGNA software** (*Distributed Environment to Support Individual and General Needs of Accommodation*)

Tirana, April 18, 2024

Module 4: Emergency management and support to local authorities

14.15 - 14.45	Assistance to the Population
14.45 - 15.15	The DESIGNA system
15.15 - 15.30	Practical activities on the system
15.30 – 16.00	Discussion, final test, and conclusion of Module 4

The assistance to the population in emergency

Objective: manage the population affected by disasters, with particular reference to the food and housing situation.

The assistance to the population in emergency

Following a disaster, the first need is the rescue of missing and injured people, but already in the hours immediately following the question arises of having to accommodate and provide food to people who have had to abandon their homes and all their personal belongings.

The assistance to the population in emergency

In the case of a disaster, the Italian State guarantees housing assistance to all persons permanently living in a house declared condemned following an emergency, independently of their nationality.

Temporary shelters

In the first days/weeks the displaced people are housed in:

- **TENTED CAMPS - CONTAINER CAMPS - GYMS - SCHOOLS**
- **HOTEL** - Room and board in hotels



Types of medium-long term assistance to the population in Italy

- **E.H.S.=Emergency Housing Solutions** (In Italian **S.A.E.=Soluzioni Abitative di Emergenza**) - Temporary one- or two-family buildings
- **H.D.H.S.=High Density Housing Solutions** (In Italian **S.A.D.A.=Soluzioni ad Alta Densità Abitativa**) - Temporary/permanent buildings from 3 to 6 floors (condominiums), seismically isolated, suitable for hosting dozens of families

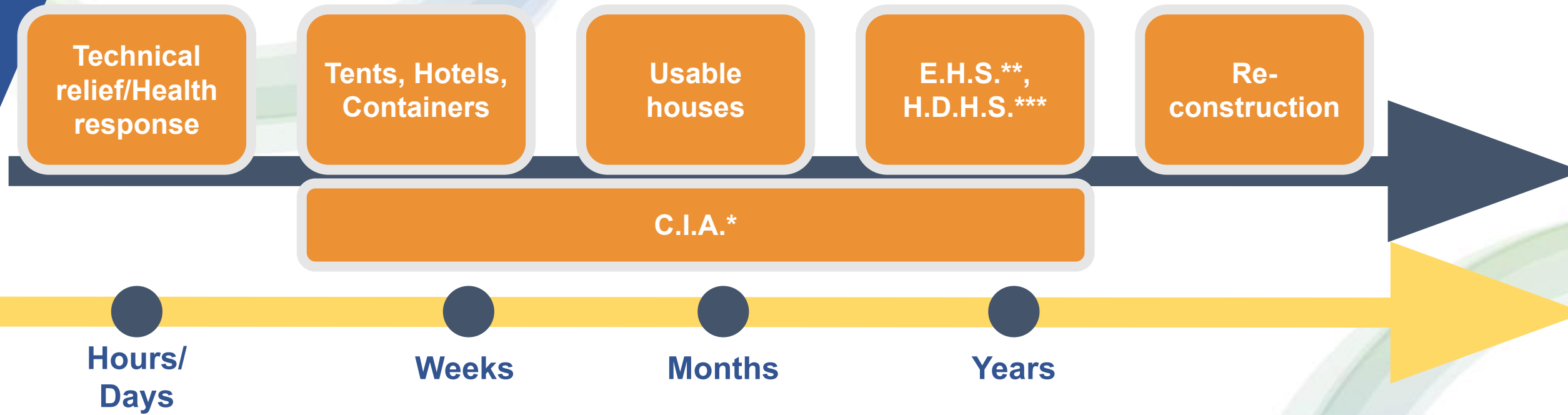


An alternative type of assistance

C.I.A.=Contribution for Independent Accommodation (in Italian C.A.S=Contributo di Autonoma Sistemazione) – Monthly amount paid to families based on the number of members of each family



Types and Chronology of the assistance of the population (1)



* C.I.A.=Contribution for Independent Accommodation (in Italian C.A.S.=Contributo di Autonoma Sistemazione)
**E.H.S.=Emergency Housing Solutions (in Italian S.A.E.=Soluzioni Abitative di Emergenza)
***H.D.H.S.=High Density Housing Solutions (in Italian S.A.D.A.=Soluzioni ad Alta Densità Abitativa)

Types and Chronology of the assistance of the population (2)

Event	When	Short term	Medium term	Long term
Earthquake	After	Tents, Hotels, C.I.A.*	Hotels, C.I.A.*, Usable Houses, E.H.S.**, H.D.H.S.***	Reconstruction
Volcanic Eruption	Before/After	Evacuation	Hotels, C.I.A.*, Usable Houses	Relocation
Flood	Before/After	Indoor emergency sheltering	Hotels, C.I.A.*, Usable Houses	Reconstruction

- * C.I.A.=Contribution for Independent Accommodation (in Italian C.A.S.=Contributo di Autonoma Sistemazione)
- **E.H.S.=Emergency Housing Solutions (in Italian S.A.E.=Soluzioni Abitative di Emergenza)
- ***H.D.H.S.=High Density Housing Solutions (in Italian S.A.D.A.=Soluzioni ad Alta Densità Abitativa)

How to manage the assistance of the population

Managing assistance to the population means:

- Know the different types of accommodation, their locations and the times for their use;
- Know the needs of displaced families and people;
- Assign families the best types of accommodation, varying them over time if necessary;
- Manage amounts owed to reception facilities or families;
- Make information available for necessary checks.

How to manage the assistance of the population

To be able to carry out all these tasks, the DPC* - in collaboration with EUCENTRE (European Centre for Training and Research in Earthquake Engineering) - created the software named DESIGNA

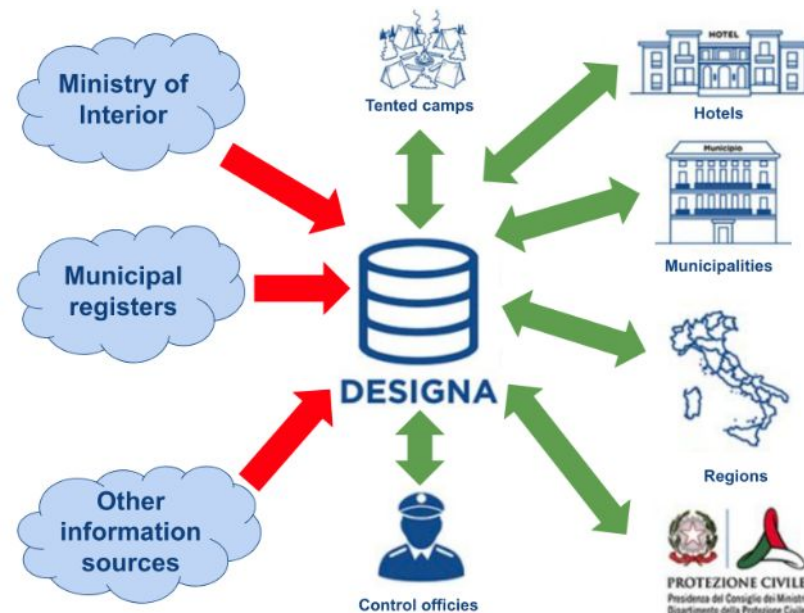


(Distributed Environment to Support Individual and General Needs of Accommodation)

* DPC=Dipartimento della Protezione Civile - The department of the Italian Prime Minister dedicated to civil protection

How to manage the assistance of the population

DESIGNA is a **web platform** available to all **members of the National Civil Protection System** (Municipalities, Regions, Volunteers Organizations) and to the accommodation facilities which host **displaced people.**



System activation - When

Following the occurrence of a disaster, the DPC **makes DESIGNA available**, the use of which can directly involve the **Department itself**, or be delegated, totally or partially, to the **competent local authorities**.

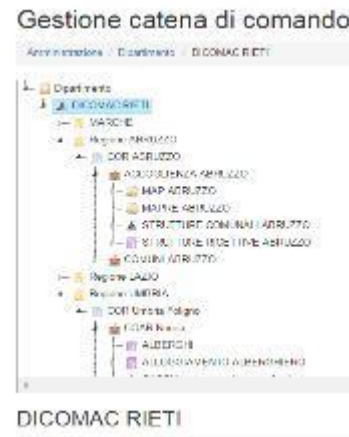
In any case, **technical-operational support** is guaranteed by a dedicated structure of the Department.

DESIGNA can be usefully used for a **long time** (even several years) after the event that led to its adoption, until the conclusion of the assistance activities for the population.



System activation - How

Immediate acquisition from the Ministry of the Interior or from the Municipalities of the **basic personal data relating to the population** of the affected areas, to facilitate the identification of the people to be assisted (using the **tax code** as a unique key). Intervention, immediately after the event, of **expert personnel** in the area to **activate the system** and, where necessary, **train and assist local officials**. Creation of the **coordination structure** suitable for the emergency and **enabling access** of the components of the National Service (Regions, Municipalities, accommodation operators) with **specific authorizations** for their skills.



DESIGNA - Assistiti per comune di provenienza
aggiornato al 15/05/2017

PROVINCIA	COMUNICAZIONE di provenienza degli assistiti	ASSISTITI IN TENDENTE (DESIGNATI)	A SERVIZIO COMUNALI	A SERVIZIO IN TENDENTE COMUNALE	A SERVIZIO IN TENDENTE REGIONALE	Tot. assistiti per comune
01	Assistenza	0	0	0	0	0
02	Assistenza	0	0	0	0	0
03	Assistenza	0	0	0	0	0
04	Assistenza	0	0	0	0	0
05	Assistenza	0	0	0	0	0
06	Assistenza	0	0	0	0	0
07	Assistenza	0	0	0	0	0
08	Assistenza	0	0	0	0	0
09	Assistenza	0	0	0	0	0
10	Assistenza	0	0	0	0	0
11	Assistenza	0	0	0	0	0
12	Assistenza	0	0	0	0	0
13	Assistenza	0	0	0	0	0
14	Assistenza	0	0	0	0	0
15	Assistenza	0	0	0	0	0
16	Assistenza	0	0	0	0	0
17	Assistenza	0	0	0	0	0
18	Assistenza	0	0	0	0	0
19	Assistenza	0	0	0	0	0
20	Assistenza	0	0	0	0	0
21	Assistenza	0	0	0	0	0
22	Assistenza	0	0	0	0	0
23	Assistenza	0	0	0	0	0
24	Assistenza	0	0	0	0	0
25	Assistenza	0	0	0	0	0
26	Assistenza	0	0	0	0	0
27	Assistenza	0	0	0	0	0
28	Assistenza	0	0	0	0	0
29	Assistenza	0	0	0	0	0
30	Assistenza	0	0	0	0	0
31	Assistenza	0	0	0	0	0
32	Assistenza	0	0	0	0	0
33	Assistenza	0	0	0	0	0
34	Assistenza	0	0	0	0	0
35	Assistenza	0	0	0	0	0
36	Assistenza	0	0	0	0	0
37	Assistenza	0	0	0	0	0
38	Assistenza	0	0	0	0	0
39	Assistenza	0	0	0	0	0
40	Assistenza	0	0	0	0	0
41	Assistenza	0	0	0	0	0
42	Assistenza	0	0	0	0	0
43	Assistenza	0	0	0	0	0
44	Assistenza	0	0	0	0	0
45	Assistenza	0	0	0	0	0
46	Assistenza	0	0	0	0	0
47	Assistenza	0	0	0	0	0
48	Assistenza	0	0	0	0	0
49	Assistenza	0	0	0	0	0
50	Assistenza	0	0	0	0	0
51	Assistenza	0	0	0	0	0
52	Assistenza	0	0	0	0	0
53	Assistenza	0	0	0	0	0
54	Assistenza	0	0	0	0	0
55	Assistenza	0	0	0	0	0
56	Assistenza	0	0	0	0	0
57	Assistenza	0	0	0	0	0
58	Assistenza	0	0	0	0	0
59	Assistenza	0	0	0	0	0
60	Assistenza	0	0	0	0	0
61	Assistenza	0	0	0	0	0
62	Assistenza	0	0	0	0	0
63	Assistenza	0	0	0	0	0
64	Assistenza	0	0	0	0	0
65	Assistenza	0	0	0	0	0
66	Assistenza	0	0	0	0	0
67	Assistenza	0	0	0	0	0
68	Assistenza	0	0	0	0	0
69	Assistenza	0	0	0	0	0
70	Assistenza	0	0	0	0	0
71	Assistenza	0	0	0	0	0
72	Assistenza	0	0	0	0	0
73	Assistenza	0	0	0	0	0
74	Assistenza	0	0	0	0	0
75	Assistenza	0	0	0	0	0
76	Assistenza	0	0	0	0	0
77	Assistenza	0	0	0	0	0
78	Assistenza	0	0	0	0	0
79	Assistenza	0	0	0	0	0
80	Assistenza	0	0	0	0	0
81	Assistenza	0	0	0	0	0
82	Assistenza	0	0	0	0	0
83	Assistenza	0	0	0	0	0
84	Assistenza	0	0	0	0	0
85	Assistenza	0	0	0	0	0
86	Assistenza	0	0	0	0	0
87	Assistenza	0	0	0	0	0
88	Assistenza	0	0	0	0	0
89	Assistenza	0	0	0	0	0
90	Assistenza	0	0	0	0	0
91	Assistenza	0	0	0	0	0
92	Assistenza	0	0	0	0	0
93	Assistenza	0	0	0	0	0
94	Assistenza	0	0	0	0	0
95	Assistenza	0	0	0	0	0
96	Assistenza	0	0	0	0	0
97	Assistenza	0	0	0	0	0
98	Assistenza	0	0	0	0	0
99	Assistenza	0	0	0	0	0
100	Assistenza	0	0	0	0	0



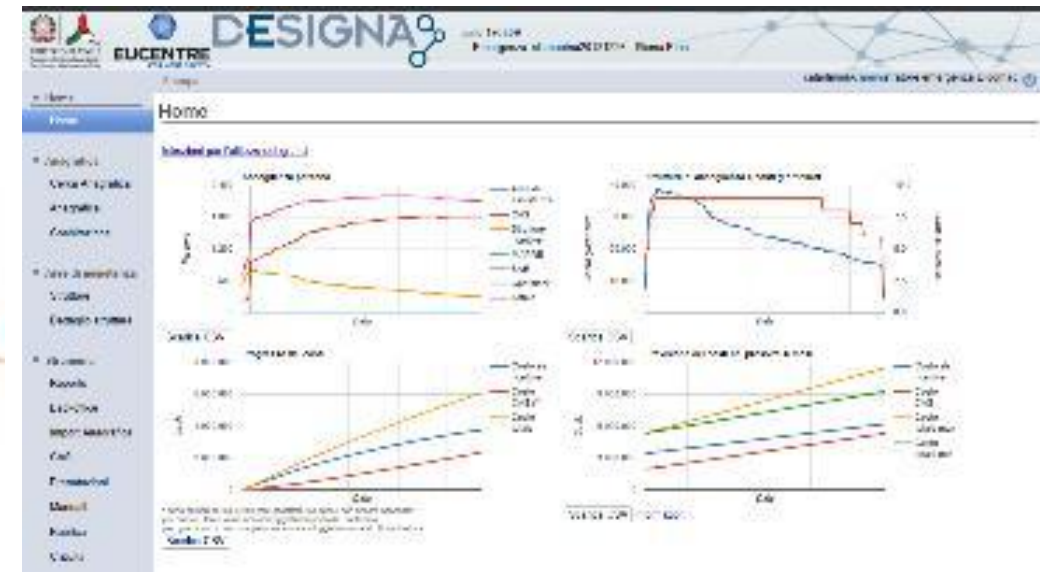
Status of Use of DESIGNA

DESIGNA is currently used to manage population assistance in the following emergencies:

- **Central Italy** earthquakes (August and October 2016/January 2017)
- **Ischia** earthquake (August 2017)
- **Etna countries** earthquake (26 December 2018)
- **COVID** emergency (2020-2021)
- **Ukrainian refugee** emergency (2022-)
- **Flood and landslide** Ischia (2022)
- **Umbertide** earthquake (2023)

The DESIGNA system

The system offers the possibility of **managing and monitoring** the type of assistance chosen by **each citizen involved** or by **his family**, and allows the **evolution during the emergency** to be **followed in real time**. This way all duplications are avoided, **errors are reduced** and transparency is guaranteed at every level.



The DESIGNA system

Codice Fiscale

CODICE FISCALE BTARMN41L45G311J

COGNOME ABATE

NOME ERMINIA **SESSO** F

LUOGO DI NASCITA PANNARANO

PROVINCIA (SIGLA) **DATA DI NASCITA** 05 ~ 07 ~ 1941

DESIGNA build 230117
Emergenza: EME_FRANA_ISCHIA - Eme Fra
rfuchs(Ammi)

Stampa

Anagrafica
Anagrafica di ABATE ERMINIA

Dati anagrafici Logistica Dati aggiuntivi Validazioni

Validazione: non specificato

Codice fiscale BTARMN41L45G311J Codice STP

Cognome ABATE Nome ERMINIA

Sesso M F

Luogo di nascita Pannarano G311 Data di nascita 05/07/1941

Luogo di Residenza Casamicciola Terme B9

Indirizzo Residenza VIA CUMANA, 111

Comune Domicilio Casamicciola Terme B9

Indirizzo Domicilio

Comune Domicilio CAS

Indirizzo Domicilio CAS

Età 82 a 8 m Età al 26/11/2022 81 a 4 m

Cellulare 1 Cellulare 2

Email Cittadinanza

Comune Provenienza

Deceduto

Note

Documento

Tipo documento: Numero:

Each displaced person is identified in DESIGNA by their **tax code**, a unique code made up of a few letters of surname and name, date and place of birth

The DESIGNA home page

Navigation bar

Graphs showing, by type of assistance:

- The cost progress of the people assisted;
- The number of accommodation facilities involved;
- The expected costs for the next six months.

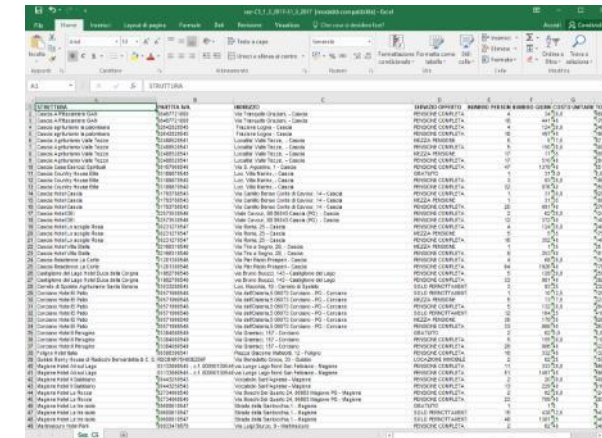


Reporting

DESIGNA facilitates **reporting procedures** between the various levels of emergency management (expense report relating to the different forms of assistance between Municipalities and Regions and between Regions and DPC).

It allows the operator to produce **monthly reports for accommodation facilities** with a list of guests, treatments enjoyed and amounts due.

Provides assistance in **controls by management officials (validation)** and **judicial and accounting authorities.**



**Let's now see
some examples
using DESIGNA directly**



FINAL TEST



TRAINING COURSE FOR ALBANIAN CIVIL PROTECTION EXPERTS

Module 4

Emergency management and support to local authorities

The assistance to the population in emergency and the DESIGNA software

Raffaella Emett
raffaella.emett@protezionecivile.it

Renato Fuchs
renato.fuchs@eucentre.it